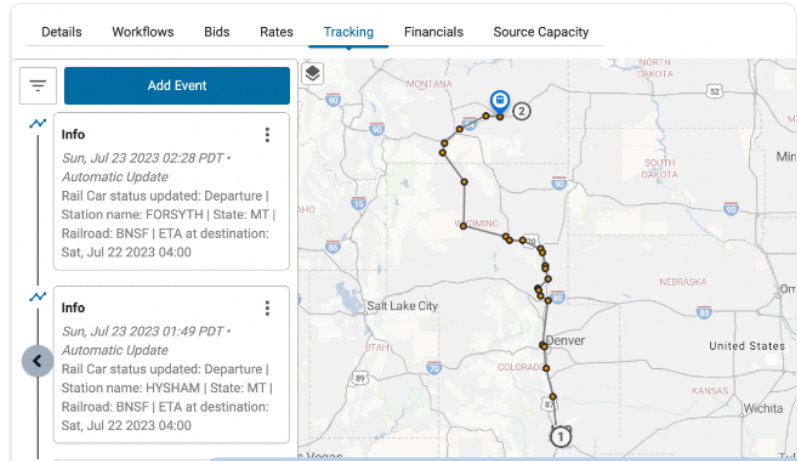




# Shipwell Rail Visibility

## Your clear path to rail and intermodal efficiency and control

For shippers using railroads either fully or partially for their goods transportation, Shipwell Rail Visibility offers unmatched visibility and control. It helps transportation teams streamline production, delight customers, and expand their rail-based operations. Whether integrating rail insights into a broader multimodal journey or specifically tracking railcars, Shipwell guarantees precise ETAs, high-quality data, and comprehensive rail information from all North American sources and terminals.



### Key benefits of using Rail include:

- Reduced freight costs by using rail which is often cheaper for the long haul portion.
- Faster transit times by minimizing handling of cargo.
- Decreased environmental impact through lower carbon emissions.
- Increased reliability by minimizing exposure to delays.

### Increased rail visibility and efficiency

Real-time data enables **75% more advance notice** of potential delays vs manual methods.

Automated tracking can allow **up to 95% on-time notification** of delay info to customers.

Combined efficiencies can **reduce total operational costs by 7-18%** from reduced storage fees, out-of-service lease credits, demurrage charges, expedited shipment charges, and dispute fees.

Get **90% visibility** of railcar locations at any given time and full visibility across the rail network for your rail shipments.

**Eliminate almost 100% of errors** from manual tracking processes involving spreadsheets, phone calls, emails, etc.

**Eliminate 80-90% of manual administrative tasks** like phone calls and data entry saving valuable staff time and effort.

### Fix it with actionable, real-time information on your rail equipment and shipments

Shipwell Rail Visibility gives you real-time visibility into the status of your rail shipments. You can track the location of your shipments on a map, view ETAs to the final destination, and receive alerts about shipment changes. This information can help you to make informed decisions about your shipments, such as whether to reroute a shipment or adjust your production schedules.

#### Transparency



Get real-time visibility into your railcar supply chain, from origin to destination.

#### Streamlining



Streamline railcar planning, scheduling, and communication with a single, convenient application.

#### Control



Gain control over your railcar assets and operations with a single source of truth.

#### Efficiency



Improve efficiency and productivity with real-time data and insights.

# Get real-time visibility Into your railcar shipments

Shipwell Rail Visibility is powered by RailSight from Railinc, TransmetriQ, the most comprehensive, single-source rail shipment-tracking service available in the market today. RailSight Track and Trace sends out near real-time rail data around the clock, tracking railcars and intermodal equipment on more than 600 rail carriers throughout North America. By enhancing overall visibility and eliminating blind spots in the rail tracking process, RailSight Track and Trace makes sense of rail equipment, routes, and schedules, and empowers you with critical and actionable information on your rail equipment and shipments.

## The cost of poor rail visibility

As a shipper, you know that getting accurate and real-time visibility into the status of your rail shipments can be a challenge. This can impact your bottom line, including:



### Delays

Unpredictable railcar arrivals hinder communication, resulting in dissatisfied customers, lost sales, and revenue.



### Missed deadlines

Without reliable timelines, disruptions ripple through the supply chain, leading to missed deadlines and costly coordination issues.



### Increased costs

Inadequate rail tracking raises inventory, transportation, labor, and penalty costs, often requiring expensive alternatives for late shipments.

## Improved visibility

Shipwell Rail Visibility gives you a clear view of your railcar shipments with a high-quality API and data pipeline and with a real-time map. This helps you track the progress of your shipments and identify potential delays.

**Map:** See the real-time location of your railcars on a map. This helps you track the progress of your shipments and identify any potential delays.

**Accurate location data:** Shipwell Rail Visibility uses GPS data to track the location of your railcars. This ensures that you have accurate and up-to-date information about the location of your shipments.

**Share location and ETA:** Share the location and ETA of your shipments with other supply chain stakeholders. This helps ensure everyone is on the same page and that shipments can be moved smoothly through the supply chain.

**Avoid rail yard fees:** Know the current locations of your freight and ETAs, which helps you keep cargo moving and avoid fees at rail yards.

**Rail Visibility via API:** Shipwell uses Standard Point Location Code (SPLC) and provides this access via API to provide you with high-quality, accurate, and up-to-date information about the location of your railcars. This means you can always know where your shipments are and when they're expected to arrive.

## Multi-mode shipment creation

Shipwell Rail Visibility allows you to choose the best mode of transportation for each of your shipments, including rail, drayage, FTL, LTL, parcel, ocean, and air. This helps you track your entire supply chain in one place.

**Flexibility:** Choose the best mode of transportation for each shipment, helping you optimize your shipments and save money.

**Convenience:** Create multi-mode shipments in one place, saving time and hassle.

**Visibility:** Get visibility into the entire journey of your shipments, helping you track your shipments and make informed decisions.

## About Shipwell

At Shipwell, we empower supply chains with increased efficiency and service effectiveness at scale. Our solution combines everything shippers need, from transportation management and visibility to procurement, in a comprehensive, easy-to-use platform, so shippers can effectively operate, manage, and optimize their entire shipping process seamlessly.

To learn more, visit [shipwell.com](https://shipwell.com).

